

Safer Rotherham Partnership Plan 2022-2025

Working together to make Rotherham safe, to keep Rotherham safe and to ensure the communities of Rotherham feel safe



Contents

Foreword	3
1. Introduction	4
2. How we decided our priorities	4
3. Outcomes of the Safer Rotherham Partnership Plan 2018-2022	5
4. Safer Rotherham Partnership Priorities 2022-25	7
4a. Protecting Vulnerable Children	8
4b. Protecting Vulnerable Adults	9
4c. Safer and Stronger Communities	10
4d. Protecting People from Violence and Organised Crime	11
5. Governance structure	13
6. Delivery plans, performance management and review	14
7. Find out more	14



Councillor
Saghir Alam OBE

Foreword

Rotherham is a great place and we want everyone to enjoy living, working, studying and making the most of the many leisure opportunities and public spaces here. The Safer Rotherham Partnership Plan 2022-25 sets out the commitments and ambitions of partners to ensure that all people in Rotherham feel

safe as they go about their daily lives.

Over the last 4 years, the partnership has worked together to achieve the community safety priorities identified within our last plan.

Protecting vulnerable children has been a key priority. It is good to see that work to increase awareness of the early warning signs of child sexual exploitation and child criminal exploitation with children and families' workers and members of the public, is resulting in increased intelligence reports and referrals to the Police. This work will carry on as we continue to prioritise protecting children from being drawn into all forms of exploitation, abuse and criminality and to disrupt those who set out to perpetrate these abhorrent crimes.

We have carried out some successful work to protect adults who find themselves in a vulnerable situation, for example due to mental health or substance abuse, and who are not able to protect themselves from harm. Partners have put support in place to reduce the risk of them becoming victims of crime or being drawn into offending. This work will continue.

I have been proud to see the progress made in tackling domestic abuse which is enhancing our services to domestic abuse victims and survivors and tackling perpetrator behaviour. Our new partnership Domestic

Abuse Strategy published in January 2022 puts us in a strong position to move forward and fulfil the duties of the Domestic Abuse Act 2021.

Neighbourhood crime and anti-social behaviour have a very damaging impact on residents' lives and wellbeing. We have seen positive progress in addressing these problems, achieved by bringing Police and Council officers together in three co-located neighbourhood teams. We will continue to build on this approach.

We have delivered some highly successful educational work with children and young people to explore and challenge attitudes that foster division and hate in communities, equipping our young people to be responsible citizens in the future.

Last year, the Safer Rotherham Partnership allocated resources for a new Organised Crime Partnership Coordinator. We are already seeing the benefits in increased disruption of organised crime groups and better information to Ward Councillors to assist neighbourhood level problem solving. We are now building on these early successes.

I welcome the work carried out by partners to review our priorities and to agree new commitments for the next three years. There are no easy answers to the challenges we face and we know that there will be constant new challenges to deal with.

I would like to thank all board members for their hard work and participation over the last four years and I look forward to working with you in future years where we will continue to strengthen our partnership for the benefit of everyone in Rotherham.

Councillor Saghir Alam OBE

Chair of the Safer Rotherham Partnership Board

1. Introduction

The Safer Rotherham Partnership is the borough's Community Safety Partnership, set up under the Crime and Disorder Act 1998. Responsible authorities have a duty to work together to protect their local communities and help people feel safer. They work out how to deal with crime and local issues like anti-social behaviour, drug or alcohol misuse and reoffending. They assess local crime priorities annually, consulting with partners and the local community about their priorities and monitor progress in achieving them. There are five responsible authorities that make up the Safer Rotherham Partnership:

- Probation Service
- Rotherham Clinical Commissioning Group
- Rotherham Metropolitan Borough Council
- South Yorkshire Fire and Rescue
- South Yorkshire Police

Voluntary Action Rotherham is an additional and valuable member of the Safer Rotherham Partnership, representing and promoting the role of the voluntary and community sector in tackling local crime and community safety issues. The Police and Crime Commissioner for South Yorkshire is also represented at meetings, helping to join up work on local priorities with the South Yorkshire Police and Crime Plan.

Our vision remains unchanged:

Working together to make Rotherham Safe, to keep Rotherham safe and to ensure the communities of Rotherham feel safe

The Safer Rotherham Partnership has agreed its priorities for 2022-2025 after conducting wide ranging and inclusive research, analysis and consultation. The priorities are:

- Protecting vulnerable children
- Protecting vulnerable adults
- Safer and stronger communities
- Protecting people from violence and organised crime

The plan demonstrates how strong strategic leadership, planning, performance management and problem solving will result in action plans which aim to deliver long term, sustainable solutions and improved outcomes for the people of Rotherham. The plan will be reviewed annually to ensure that any new and emerging policies, risks and consultation feedback are identified and responded to. Annual reports will keep the people of Rotherham up to date with progress.

2. How we decided our priorities

The Safer Rotherham Partnership has used an evidence based approach to decide priorities, by drawing on the best available data and information. This included local and national crime and community safety data; the expertise and judgement of professionals and practitioners working in local partner organisations; and the views of people who live, visit or work in Rotherham. Our considerations covered a range of crimes and vulnerabilities where we looked at the level of harm caused to victims, recognising that crimes can cause physical, psychological and financial harm. We also looked at how different crimes affect the wider

community. The frequency and scale of crimes was another important consideration, for example, how often each type of crime is happening and whether it is predicted to increase or decline over the next 12 months. When considering key risks, we also looked at the reliability of the knowledge and data the assessment was based on, how well-placed partners are to mitigate the risks, including the resources available, and external factors such as public or residents' expectations. This comprehensive analysis helped us to identify the most significant current and emerging crime and community safety risks for Rotherham, which we confirmed and explored further through consultation with our partners, including voluntary and community organisations, business representatives and members of the public.

3. Outcomes of the Safer Rotherham Partnership Plan 2018-2022

The Safer Rotherham Partnership agreed five priorities from 2018-2022. These were: Protecting Vulnerable Children; Protecting Vulnerable Adults; Building Confident and Cohesive Communities; Domestic Abuse and Sexual Offences; and Tackling Serious and Organised Crime. Annual reviews of objectives and performance measures ensured proactive responses were made to new and emerging challenges and opportunities.

Progress over the 4 years covered by the last plan included:

- **Protecting Vulnerable Children**

The Safer Rotherham Partnership worked alongside the Safeguarding Children Partnership to develop a strategy to tackle child criminal

exploitation. The strategy provided a focus for the delivery of core operations and the Epic project that supports vulnerable young people, alongside Barnsley and Doncaster partners. Successes include engagement with almost 12,000 secondary age pupils in Rotherham and referrals to the Police have increased, safeguarding children at risk. The Safer Rotherham Partnership's role ensured targeted disruption activities.

Child sexual exploitation referrals and intelligence reports continued to be an area for close monitoring and improvement action. Awareness raising was delivered through the 'Spot the Signs' campaign. The impact of an awareness raising video aimed at the hospitality sector has been tested and results used to work with the sector to tighten safeguarding.

Online offending was adopted as a priority in 2019-20 due to concerns about increasing online incidents against young people. A Digital Champions Network was established to co-ordinate training across the partnership and raise awareness of new technologies. Messages have been promoted directly to young people through social media, with the aim of preventing online offending and promoting online safety.

- **Protecting Vulnerable Adults**

The dedicated Mental Health Clinical Specialist, based within the Police Safer Neighbourhood Service, has played a key role in tackling the challenges of mental health. Over 1,700 mental health support interventions, delivered between April 2019 and March 2022, ensured that adults with mental health needs were provided with, or signposted to, the most appropriate support, reducing their vulnerability to becoming involved with the criminal justice system as either a victim or perpetrator.

How the partnership responds to people with complex needs has been improved further through the restructuring and additional resourcing of the Community Multi-Agency Risk Assessment Conference, working towards reducing offending against vulnerable adults. There were 233 managed referrals between April 2018 and March 2022. The support provides a bespoke multi-agency response for individuals to reduce risks and vulnerabilities.

Reducing offending of high frequency offenders has been a key focus of the partnership. For example, in 2019-21, the partnership managed 110 cases, resulting in crimes committed by the managed users reducing significantly. During 2021-22, support plans were in place for all people managed under the Integrated Offender Management scheme who are in the community or coming up for prison release. The support offered through the plans resulted in reduced offending by the majority of those subject to them along with wider support in respect of employment and housing.

The Partnership enhanced its response to tackling modern slavery and human trafficking with the introduction of 13 council officers trained as single point of contact officers. This has resulted in improved working practices between agencies and higher levels of service to potential victims of modern slavery and human trafficking.

- **Building confident and cohesive communities**

We continue to improve our integrated anti-social behaviour (ASB) service, which comprises Police and Council officers co-located within three locality teams (Central, North and South areas). Good data and information sharing has allowed for “hotspot” areas to be quickly

identified, enabling tailored assessments and responses. Positive progress to reduce ASB incidents, achieved in the year prior to the Covid pandemic, is now back on track. There were 24% fewer ASB incidents reported from April 2021 to December 2021 when compared to the same period in 2020.

We have invested almost £0.5 million in improving CCTV as a deterrent to offending and to improve public use and feelings of safety in public spaces. We have supported Community Payback initiatives, where offenders work on projects to pay back the community for their crimes. We have been successful in securing external funding for an innovative project in partnership with Remedi that has delivered 65 restorative interventions with young people and adults involved in hate crimes and incidents. The project also provided education sessions with 2723 young people. In 2020, Rotherham Youth Cabinet launched their hate crime charter for schools which contains eleven pledges for schools to implement that demonstrate their commitment to tackling hate.

- **Domestic Abuse and Sexual Offences**

A new partnership Domestic Abuse Strategy was published in January 2022 that builds on the strong progress made by the previous strategy. Significant investment has been made in enhancing domestic abuse support services for victims, including new central government funding, which has supported the implementation of new duties under the Domestic Abuse Act 2021.

Since April 2018, an average of almost 3000 referrals a year were made to domestic abuse support services and just over 6700 domestic abuse crimes and incidents were recorded each year. A range of commissioned

voluntary and charity sector services delivered support, counselling, housing and refuge services to domestic abuse victims and survivors. Council housing services provided immediate support and housing for victims and children fleeing domestic abuse. A domestic abuse competency framework was put in place to ensure partner agency staff and professionals developed the knowledge and skills they need.

All Rotherham schools are participating in Operation Encompass, which ensures immediate support to children experiencing domestic abuse. Publicity campaigns have reached out to local communities, including 'Ask for Angela' and 'Ask for Ani' initiatives with shops, public houses, and other safe places. The HARK initiative is a fast track service for hospital A&E, GPs, dentists, opticians and pharmacists to obtain support for victims. Technological solutions such as Smart Water forensic spray and TecSOS technology facilitates emergency service help to victims at the time they need it most.

Rotherham has been a successful partner in the development of domestic abuse perpetrator programmes across South Yorkshire for male, female and young perpetrators. Evaluation has shown that the programme has supported perpetrators to change their behaviour

- **Tackling serious and organised crime**

Increased enforcement and a range of disruption activities to prosecute or interrupt the activities of serious organised criminals, has resulted in the dismantling of some established crime groups, whilst improved mapping processes have identified new groups. Over 500 disruptions have been recorded since 2018.

Public engagement and feedback have consistently identified that drugs (use and supply) cause significant concern within communities. Progress has been made in tackling illegal drug use and activity, using partnership tools and powers in addition to Police powers. Drug treatment services are also involved in the overall approach. Concerted partnership action is tackling cannabis cultivation which has caused significant problems for residents in some areas of the Borough in 2021-22.

The South Yorkshire Violence Reduction Unit takes a public health approach to preventing and reducing violence, delivering a range of innovative initiatives with partners. The Safer Rotherham Partnership manages the Rotherham Violence Reduction Action Plan. Initiatives include the Plan B Custody Navigator scheme delivered by City Hearts where navigators visit detainees in Police custody suites, engaging and providing support to young adults to help them make the right choices and to step away from crime.

4. Safer Rotherham Partnership Priorities 2022-25

We recognise that there is still much work to do to build on the progress made in our last plan and to respond to new and emerging crime and community safety risks, threats and vulnerabilities within our community.

The following pages set out our new priorities, some of the risks we face, and show how the organisations that make up the Safer Rotherham Partnership can work together to deliver additional activities to make our communities safer for residents, businesses and visitors to Rotherham.

4a. Protecting Vulnerable Children

Why this is a priority and key facts:		
<p>Child Abuse</p> <ul style="list-style-type: none"> • Most recorded victim and suspect relationships were family member (49%) and acquaintance (34%) • Females were more likely to be victims of sexual offences. Males were at more risk of violence with injury. • 10% of victims have also been recorded as missing from home 	<p>Child Criminal Exploitation (CCE)</p> <ul style="list-style-type: none"> • Victims of CCE are being introduced to some of the most violent crimes • 40% of offences related to drug offences • Facebook, Instagram and Snapchat are currently the most commonly used platforms to carry out CCE related activity – this can quickly change • 9% of children who went missing were linked to CCE 	<p>Child Sexual Exploitation (CSE)</p> <ul style="list-style-type: none"> • 56% of reported offences are delayed or historic offences (reported after 30 days) • In 2020-21, 93% of all victims were female – male victims may be less likely to report • Online offences have increased by 41% compared to 2019-20 • Offences related to indecent images increased by 113% • 13% of children who went missing in 2020-21 were linked to CSE

Our commitments

Objective area:	We will:
Child Abuse	<ul style="list-style-type: none"> • Increase understanding of the potential signs of neglect and child abuse through training and awareness raising with partners • Raise awareness with the public around the signs of early abuse and mechanisms for reporting
Child Criminal Exploitation (CCE)	<ul style="list-style-type: none"> • Increase understanding of CCE, reporting and responses, with professionals and the public through training and awareness raising • Work together with partners and the public to reduce the risk of CCE and ensure accurate recording of investigations and quality outcomes
Child Sexual Exploitation (CSE)	<ul style="list-style-type: none"> • Increase understanding of CSE, reporting and responses, with professionals and the public through training and awareness raising • Work together with partners and the public to reduce the risk of CSE and ensure accurate recording of investigations and quality outcomes

4b. Protecting Vulnerable Adults

Why this is a priority and key facts:		
<p>Substance misuse</p> <ul style="list-style-type: none"> • Intelligence shows common drug types were cannabis, cocaine and heroin • Offences relating to the production of drugs have increased, with drug activity mostly driven by trafficking of drugs • There is a strong association with suicidal thoughts/attempts and death from suicide • It is estimated that 89% of dependent alcohol drinkers and 46% of opiate and/or crack cocaine users are not in treatment 	<p>Mental health</p> <ul style="list-style-type: none"> • COVID has exacerbated mental health issues • Crimes involving victims with a mental health vulnerability increased by 8.1% in 2020-21 • Crimes associated with a mental health vulnerability increased by 8% - most offence types were stalking and harassment and public fear, alarm and distress • Vulnerable victims (due to mental health) were over-represented in both violence against the person and sexual offences 	<p>Modern slavery and human trafficking</p> <ul style="list-style-type: none"> • Most common exploitation was ‘forced labour in illegal activity’ (19%) and ‘forced gang related criminality’ (16%) • Perpetrators exploit vulnerable people - 48% of victims were under 18 years old • 81% of victims were male – female victims may be under-identified • Most recorded victim ethnicities were British (39%) and Albanian (26%)

Our commitments

Objective area:	We will:
Substance misuse	<ul style="list-style-type: none"> • Increase engagement and positive outcomes from substance misuse treatment services for offenders within the criminal justice system
Mental health	<ul style="list-style-type: none"> • Review the use and impact of mental health treatment requirements in the criminal justice system • Review dual diagnosis pathways to support service users with mental health and alcohol/drug use treatment needs
Modern slavery and Human Trafficking	<ul style="list-style-type: none"> • Increase understanding of the potential signs of modern slavery through training and awareness raising with partners • Raise awareness with the public around the signs of modern slavery and mechanisms for reporting

4c. Safer and Stronger Communities

Why this is a priority and key facts:		
<p>Anti-social behaviour (ASB)</p> <ul style="list-style-type: none"> • 2020-21 saw a 22% rise in reported ASB although incidents are now decreasing • Pre-existing ASB hotspots have seen an increase • Trends around increased nuisance neighbour complaints continue • Nuisance Vehicle - often off-road bikes or vehicles racing are an increasing problem 	<p>Hate crime</p> <ul style="list-style-type: none"> • Recorded hate crime in Rotherham increased by 17% in 2020-21 compared to the previous year and has increased further since • Most recorded strands were racial (64%), disability (15%) and sexual orientation (13%) • In most cases, victims were subjected to verbal abuse, including threats and intimidation • 11% of hate offences were online 	<p>Online crime</p> <ul style="list-style-type: none"> • The impact of COVID-19 restrictions was significant with interactions moving online, increasing opportunities for criminals • 67% of online offences were stalking and harassment offences • 52% of victims were vulnerable victims • Sharing of indecent images increased • Continued increases are expected due to new/evolving technology and changes in ways perpetrators use it

Our commitments

Objective area:	We will:
Making communities safer – tackling community safety priority locations	<ul style="list-style-type: none"> • Review and refresh the partnership approach to problem solving in local neighbourhoods, including thresholds and methodology for partnership activity • Seek appropriate external funding opportunities and support and participate in partnership bids to secure additional funding for activity in the borough
Preventing hate crime	<ul style="list-style-type: none"> • Focus on the use of education and engagement to prevent hate crime by tackling the drivers of hate • Improve victims’ experiences of reporting hate crime and incidents
Online crime	<ul style="list-style-type: none"> • Explore innovative ways in which partners and the public can be educated around online safety and digital technologies and develop engagement with young people, families and older people • Identify best practice in embedding online activity within service user assessments

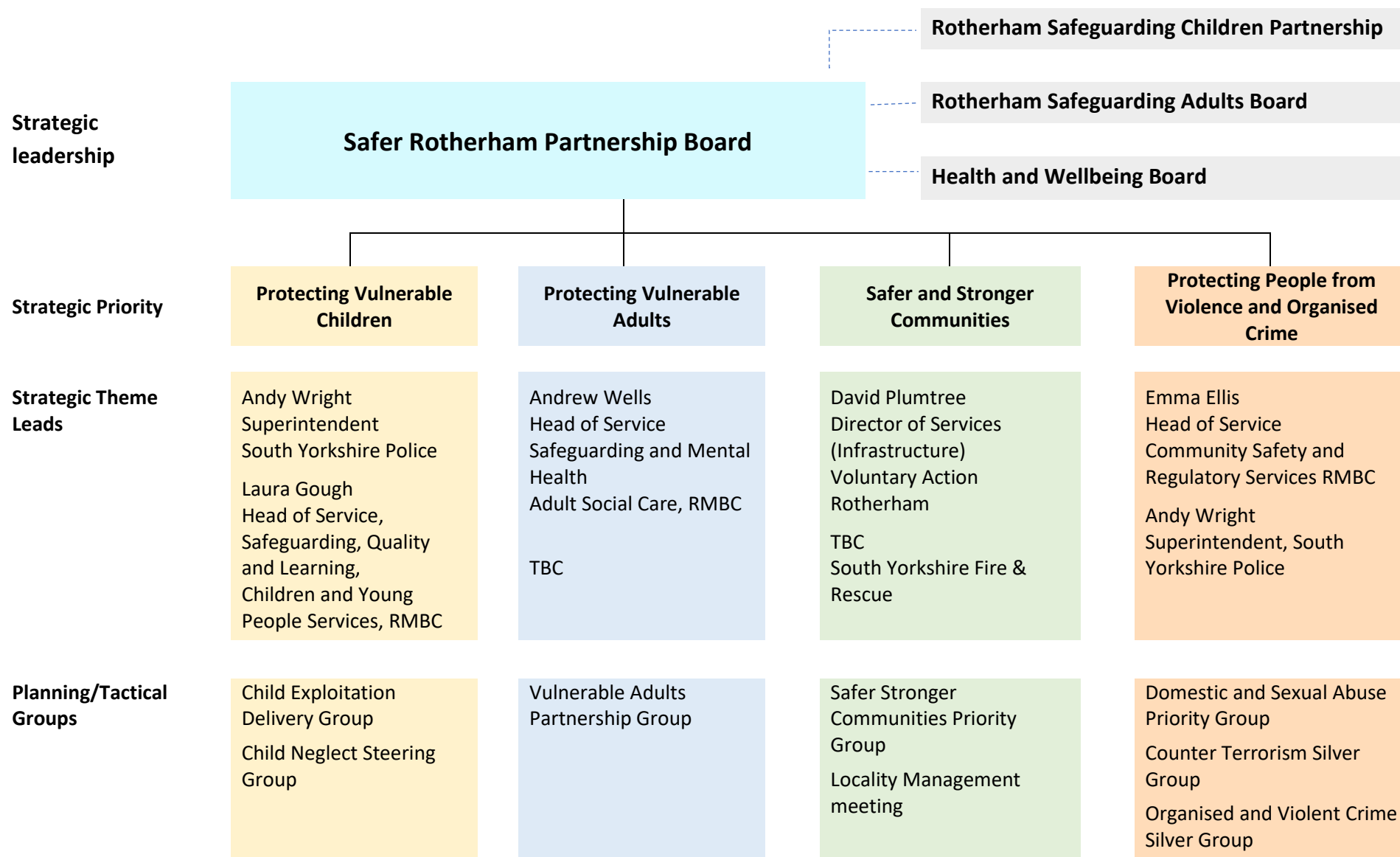
4d. Protecting people from violence and organised crime

Why this is a priority and key facts:		
<p>Domestic abuse</p> <ul style="list-style-type: none"> • Domestic abuse crimes accounted for 18% of offences reported in Rotherham in 2020-21 – it remains an under-reported crime • 76% of victims were female • Over a third of victims are experiencing long term repeated abuse • In 2020, 1,577 victims accepted support from Rotherham Council services • Teenage to adult violence increased by 28% 	<p>Rape and sexual offences</p> <ul style="list-style-type: none"> • Sexual offences decreased by 15% and rape by 33% In 2020-21 • The highest crime types were ‘sexual assault on a female aged 13 or over’ (21% of all sexual offences) and ‘rape of a female aged 16 and over’ (19% of all sexual offences) • 86.3% of victims were female - offences against males almost doubled in 2020-21 • 69.6% of adult victims were vulnerable adults 	<p>Male violence against women and girls</p> <ul style="list-style-type: none"> • In 2020-21 there were 53.7 offences per 1000 female population • 15% of victims were children • 12% of offences were online offences • The murder of Sarah Everard sparked national outrage and expectations for change • The pandemic has intensified inequalities that put women and girls at risk of gender-based violence
<p>Serious violence</p> <ul style="list-style-type: none"> • 65% of victims were male – the number of offences with a female victim rose by 23% • 18% of offences had more than one offender • 50% of attempted murders were domestic abuse related • In recent months there has been an increase in gangs of youths identifying themselves as “postcode gangs” • 38% of knife crime victims were vulnerable victims 	<p>Organised crime</p> <ul style="list-style-type: none"> • 91% of suspects in 2020-21 were male • Suspects were split by organised crime gang member (16%) or associate (84%) • 13% of suspects were aged under 18 - young people are being exploited into committing offences on behalf of organised crime gangs • 88% of all suspects were linked to drugs intelligence • Many victims were subject to verbal abuse, threats and varying degrees of physical harm 	<p>Counter terrorism</p> <ul style="list-style-type: none"> • The UK threat level is currently SUBSTANTIAL, meaning an attack is ‘highly likely’ • The threat from extreme right-wing ideologies is increasing. 2020 saw three further neo-nazi groups proscribed (banned) under UK law • Key risks are self-initiated terrorism and online radicalisation • Providing early support to safeguard children and vulnerable adults who are at risk from harmful extremist influences is vital

Our commitments

Objective area:	We will:
Domestic abuse	<ul style="list-style-type: none"> • Transform domestic abuse services, in line with the partnership strategy, to improve outcomes for victims • Ensure all those fleeing domestic abuse are able to access safe accommodation and appropriate support • Improve the use of criminal justice measures to better protect victims
Sexual abuse	<ul style="list-style-type: none"> • Review and refresh the sexual abuse delivery plan, focussing on victim engagement • Improve timely reporting of sexual offences to increase forensic opportunities
Male violence against women and girls	<ul style="list-style-type: none"> • Reduce male violence against women and girls by focussing on hot spot locations and repeat perpetrators • Deliver awareness raising events, projects and promotions aimed at improving women and girls’ safety and feelings of safety
Serious violence	<ul style="list-style-type: none"> • Provide ways out for those already entrenched in violence, or who have been previously incarcerated, to support effective rehabilitation • Reduce violence through victim identification, care and support programmes • Reduce availability and access to lethal weapons • Work to change cultural and social norms that support violence • Encourage all professionals and organisations to continue to work toward becoming trauma-informed, to an approved standard for South Yorkshire
Organised crime	<ul style="list-style-type: none"> • Identify and implement a whole system partnership approach to tackling Organised Crime • Prevent individuals and emerging groups from becoming involved in Organised Crime • Build stronger information sharing structures between partners and communities • Target our partnership approach to those causing the highest harm to individuals and groups in our communities • Disrupt Organised Crime via a partnership approach utilising the national Pursue, Prevent, Protect and Prepare framework
Counter terrorism:	<ul style="list-style-type: none"> • Reduce the risk of terrorism by taking a partnership approach to the Prevent, Protect and Prepare workstreams of the UK Contest Counter Terrorism Strategy • Achieve compliance with the Channel, Prevent, Protect and Prepare duties (under the Counter Terrorism and Security Act 2015) demonstrated through self-assessment using Home Office toolkits

5. Governance Structure



6. Delivery plans, performance management and review

Action plans will set out the key initiatives under each strategic priority including objectives, activities, measures of success, time scales, lead partner or officer, resources required and progress to date. These will help us to achieve the commitments in this plan.

Quarterly performance reports will be produced and reported by the priority strategic lead to the Safer Rotherham Partnership Board. The reports will include progress on objectives and activities within the action plans and performance against key measures which are critical to the success of the plans. The Board will monitor and oversee progress, provide strategic level decision making, constructive challenge and resolution of any blockages or barriers.

The commitments and objectives within each strategic priority area and the associated actions plans and performance measures will be reviewed annually and agreed with the Safer Rotherham Partnership Board. The

review will be based on an annual crime audit and consist of a broad evidential review of Police and partner data, robust risk assessment process and consultation with stakeholders. The annual review process will ensure the Safer Rotherham Partnership Plan 2022-25 remains fit for purpose with meaningful objectives and performance indicators in place to deliver and measure progress and improvements.

7. Find out more

For further information visit the Safer Rotherham Partnership website at www.saferrotherham.org.uk or follow us on social media for our latest news and updates at:

www.facebook.com/Rotherhamcommunitysafety

www.instagram.com/rmbccommunitysafety

www.twitter.com/RmbcSafety

If you would like this information in another language or format, please ask us. You can contact us through our website or by emailing community.safety@rotherham.gov.uk